

28 November 2022

Innovations Session N°11

Promoting circular economy and
reducing food losses and waste:
Successes by SMEs and entrepreneurs



INNOVATIONS[📶]
SERIES







Botswana slaughters 220, 000 cows for the European Union (EU) and South Africa per annum.



A cow produces 30 kg of waste (9 kg solid biomass) per day. That is 3 tons of solid biomass per year.



General organic waste from veggie retailers and restaurants.



So where does it all go?



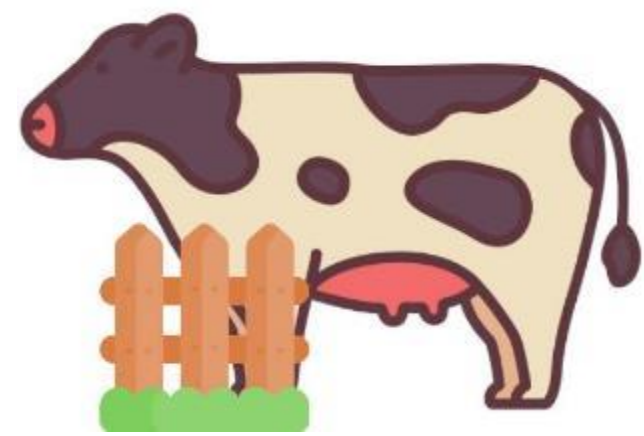




Our
Customers



Current Linear Model



Beef Industry
Feedlot



Community
Homes
Retail Outlets
Restaurants

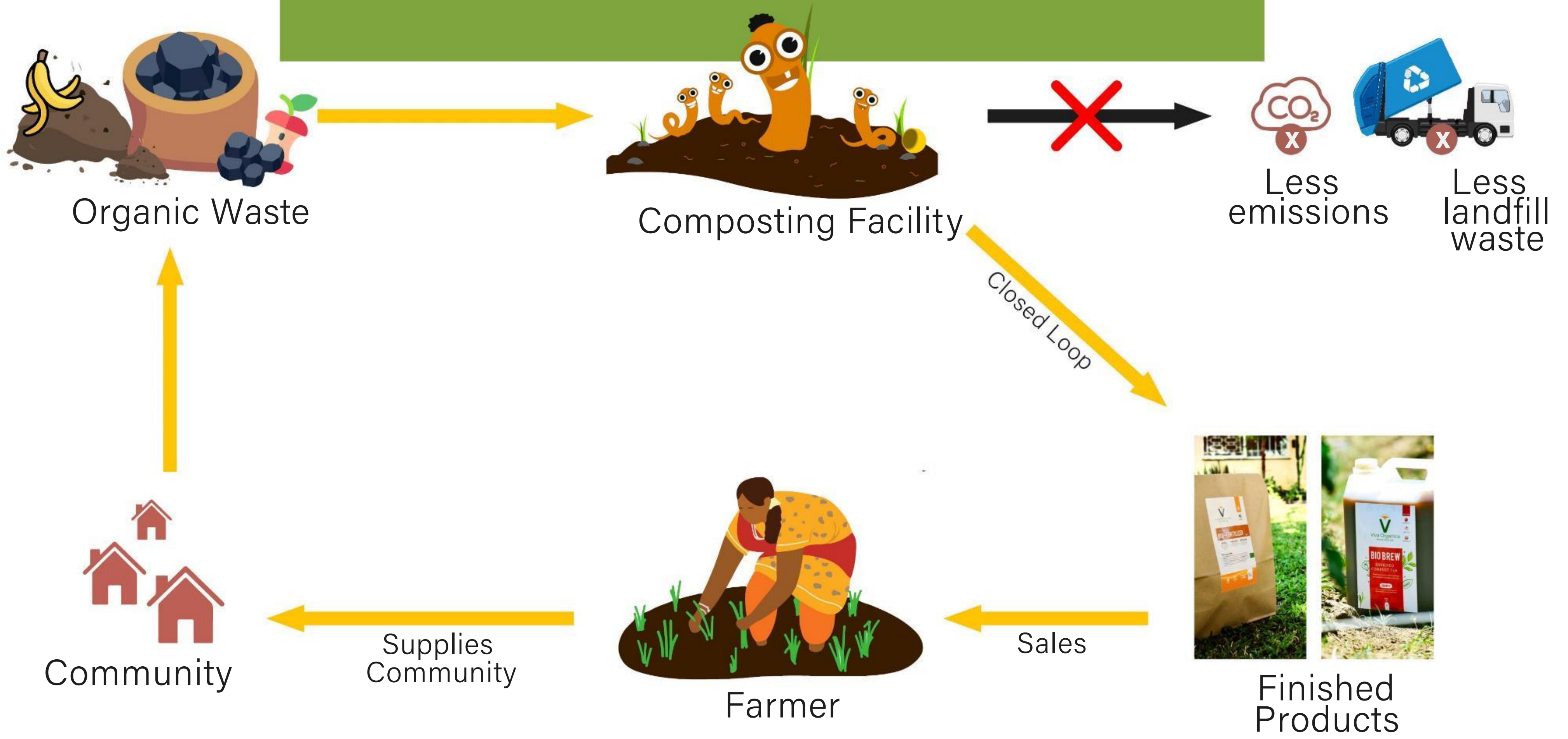


Generate
Organic Waste



End
Landfill
Value lost

Our Circular Model





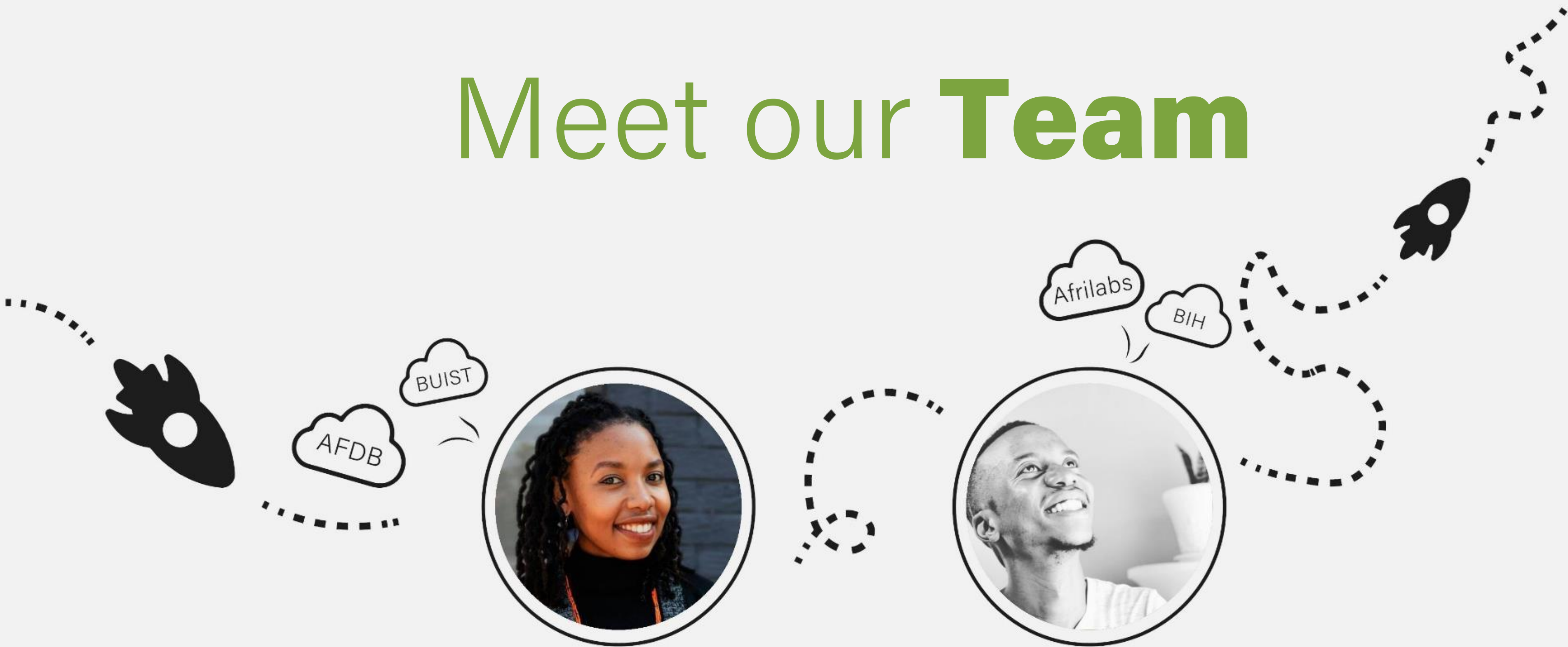


24 tons

=

8 cows

Meet our **Team**



Mmakwena Moesi
Co-founder, Operations



Amogelang Masi
Co-founder, Marketing



Thank You **Q&A**





The PAFO-COLEACP Innovations Series focuses on innovations and successes of African farmer-led businesses and SMEs. These activities are supported by the Fit For Market SPS programme, implemented by COLEACP within the Framework of Development Cooperation between the Organisation of African, Caribbean and Pacific States (OACPS) and the European Union.



Thank you

