

A stylized illustration of a group of diverse women with various hairstyles, colors, and accessories, positioned on the left side of the slide.

South-South Series: Empowering and Growing Women-led Business

Session 6: Climate-Resilient Business Models for Women Entrepreneurs

26 November 2025

Climate Impacts on Women-Led Businesses



How Climate Change Is Affecting MSMEs



Frequent floods, droughts, fires, family matters and volcanic eruptions disrupting business operations

Agro-processors facing spoilage, transport delays, and input shortages

Service providers experiencing reduced customer flow and infrastructure damage



How Women Entrepreneurs Are Adapting



Localizing and Diversifying for Resilience

- Shifting to local supply chains to reduce dependency and transportation risks
- Diversifying products to meet changing market and climate conditions.

Leveraging Low-Cost, Climate-Smart Tools

- Using solar dryers to preserve produce and reduce post-harvest losses.
- Selling via WhatsApp to reach customers directly and reduce overhead.
- Switching to biodegradable packaging to align with eco-conscious markets.

Building Collective Strength

- Forming cooperatives to pool resources and amplify bargaining power
- Creating shared logistics networks to lower transport costs and improve market access

Financing Climate Resilient Enterprises



Grants, micro-finance, revolving funds

Grants for innovation and climate-smart upgrades

Blended finance to de-risk private investment

Together, We build Resilience!





Support Systems That Make a Difference



Sector-based workshops spark peer learning and collaboration

Mentorship builds confidence and continuity planning

Regional platforms (e.g., OAS Clearinghouse) enable cross-border exchange

Peer Learning & Community-Based Approaches

Informal networks post-disaster: shared transport, market rotation

1

Sector-based workshops foster peer exchange

2

Entrepreneurs engage in regional platforms like OAS WEE Clearinghouse

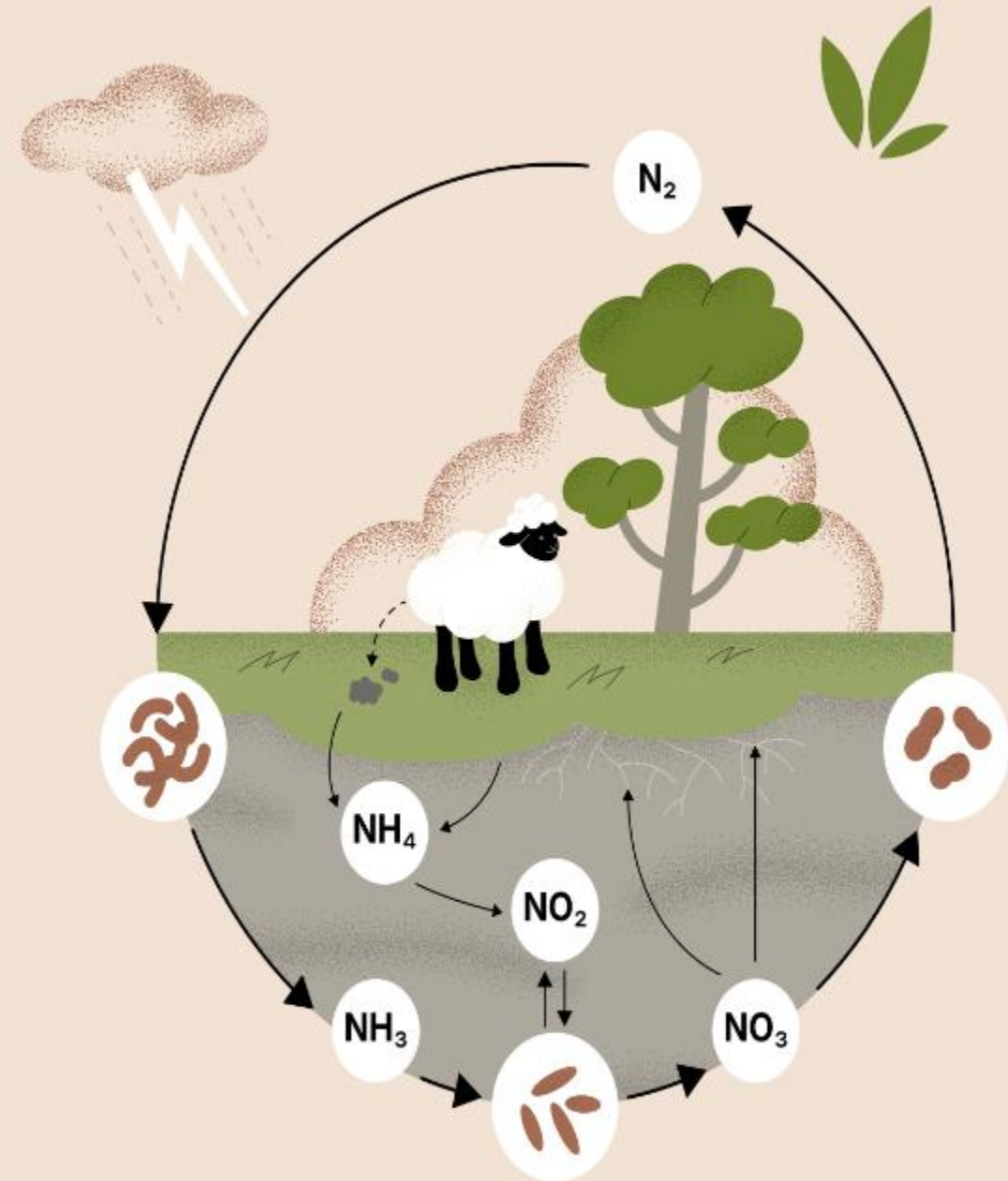
3

What Resilience Looks Like

Preparedness =
mindset + tools
+ networks

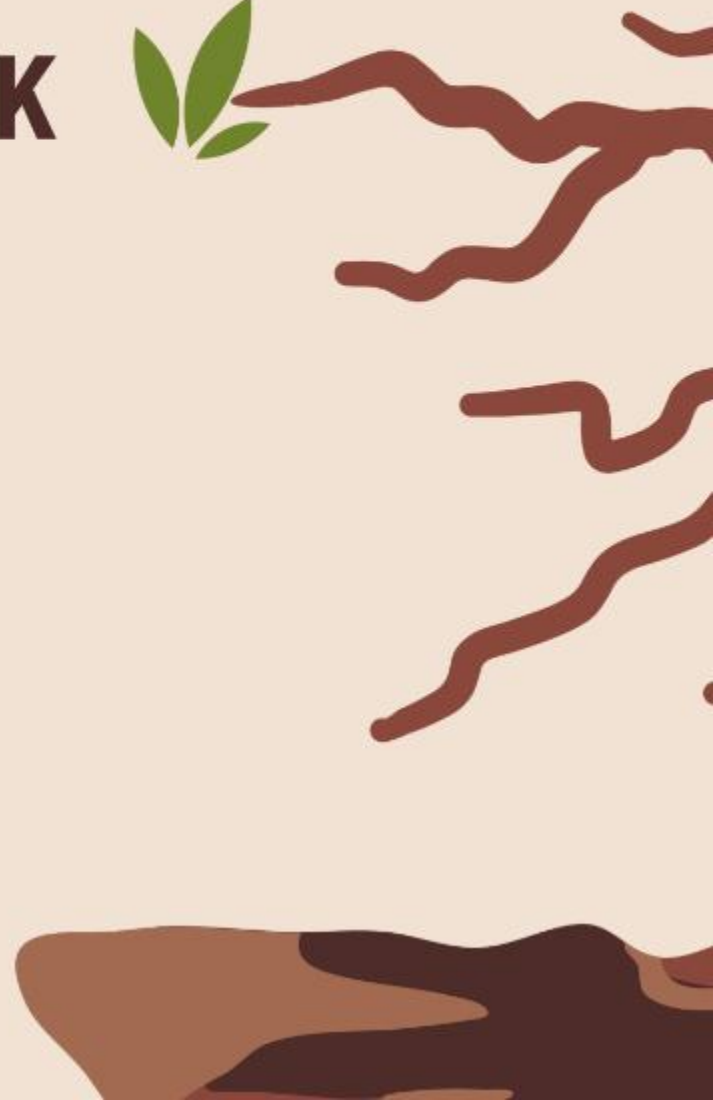
Women
entrepreneurs
adapt, innovate,
and lead

Resilience is
relational, not
just technical





SOMEONE WANTS TO ASK





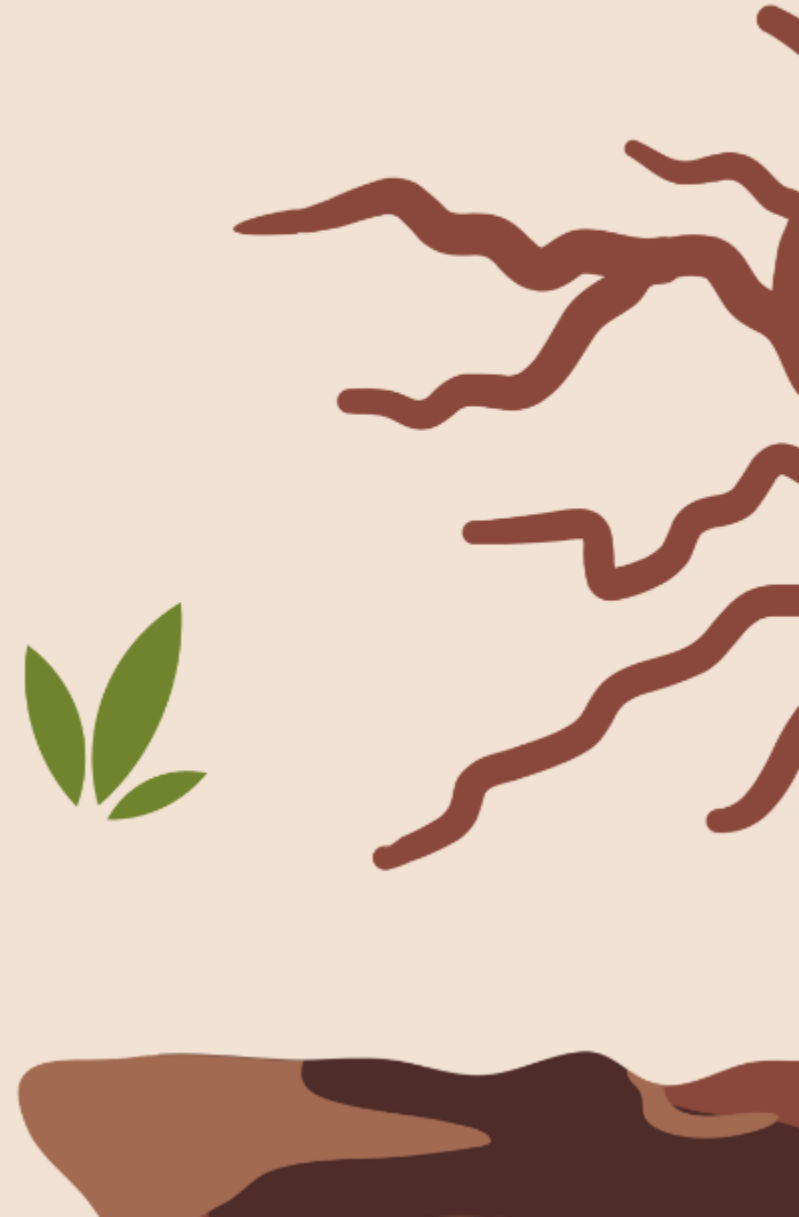
PRESENTATION CONCLUSION

When preparedness, tools, and community come together, women-owned businesses do not just survive; they adapt, innovate, and lead. These are not passive outcomes; they are the result of intentional design, strategic support, and collective strength.

Resilience, in this context, is not merely a technical capacity it is relational, cultural, and deeply human. This is why resilience must be understood as a shared responsibility - one that values lived experience, fosters collaboration, and invests in systems that allow women to grow, because when women rise, ecosystems rise with them.



THANK YOU





Thank you

This event was organised by the Fit For Market Plus programme, implemented by COLEAD within the framework of Development cooperation between the Organisation of African, Caribbean and Pacific States (OACPS), and the European Union (EU).

This publication has been produced with the financial support of the EU and the OACPS. Its contents are the sole responsibility of COLEAD and can under no circumstances be regarded as reflecting the position of the EU or the OACPS.