

16 JUNE 2026



Session n°21:

Advancing agroecology for Caribbean SMEs



Caribbean Agrifood Business Series ...



Funded by
the European Union



**THE REGENERATIVE
MINDSET
WE SHIFT THE WAY
YOU THINK!**

Erle

Rahaman-Noronha





Image © 2009 GeoEye
Data SIO, NOAA, U.S. Navy, NGA, GEBCO

©2009 Google

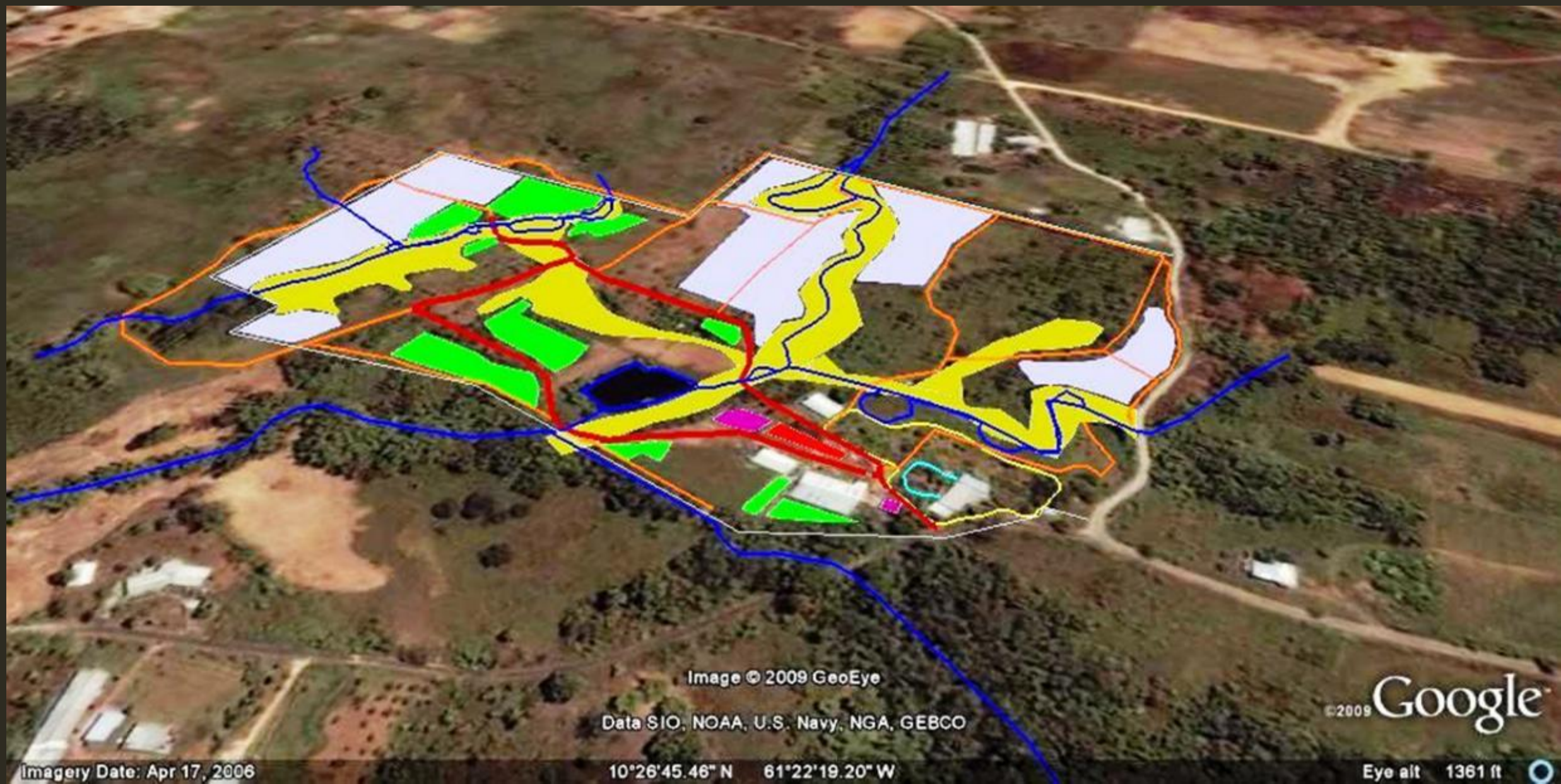


Image © 2009 GeoEye

Data SIO, NOAA, U.S. Navy, NGA, GEBCO

Imagery Date: Apr 17, 2006

10°26'45.46" N 61°22'19.20" W

©2009 Google

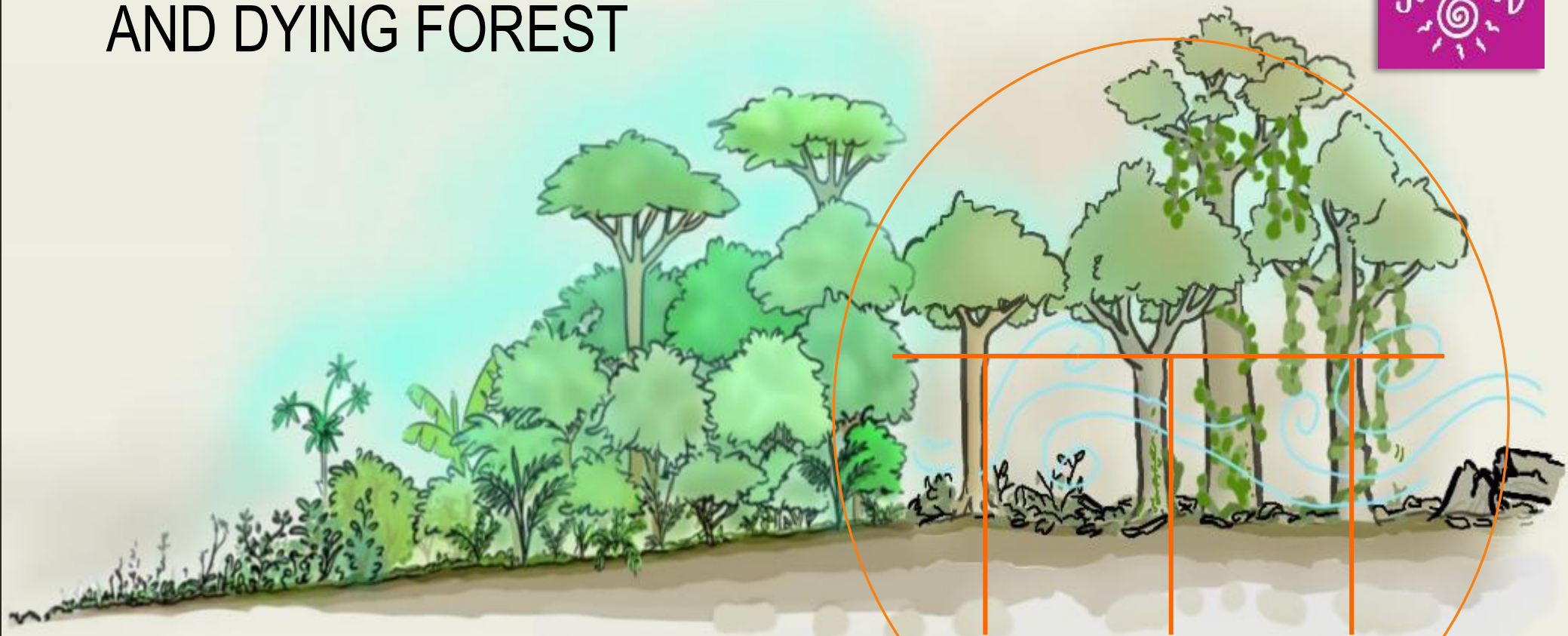
Eye alt 1361 ft







SUCCESSION, CLIMAX AND DYING FOREST



The Intelligence of Nature continuously moves
systems from Simple to Complex
We cannot fight it. How do we harness it?



INCREASE COMPLEXITY WITHIN YOUR SOIL

- Feed your system not your plants
- Mulch heavily
- Prune frequently
- Encourage fungal networks
- Eliminate chemicals



PESTS OR OPTIMIZERS?

All life seeks to move a system from simple to complex.

There are no pests in an ecosystem, only optimizers

‘Pests’ signify an imbalance in the system that need to be rectified

- Too much light or too little light
- Too many or a lack of certain nutrients in the soil
- Too much or too little water
- Old or weak plants
- Plants growing in sub optimal conditions



WEEDS: A PLANT IN THE WRONG PLACE!

Weeds are a response an imbalance in the system.

- Too much light
- Poor soil
- Too many nutrients

Solutions to consider

- Stratification and pruning to control light
- Building soil organic matter
- Reducing external inputs

WHAT IS YOUR PERSONAL ROLE IN THE ECOSYSTEM?

HOW ARE YOU MOVING THE ECOSYSTEM FROM SIMPLE
TO COMPLEX?

www.wasamakipermaculture.org

Fb @wasamakipermaculture

Instagram @wasamakipermaculture

Thank you

